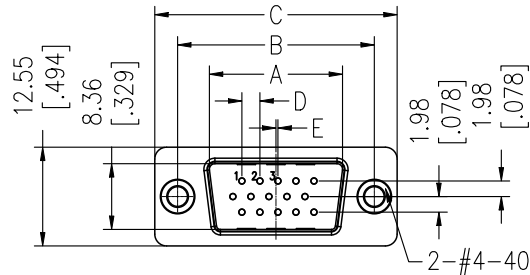


HSF

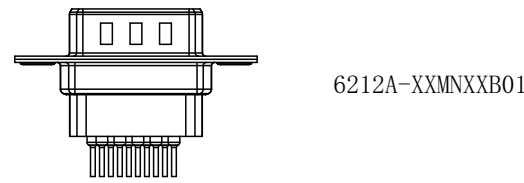
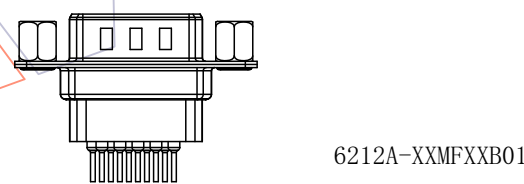
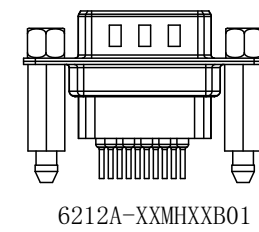
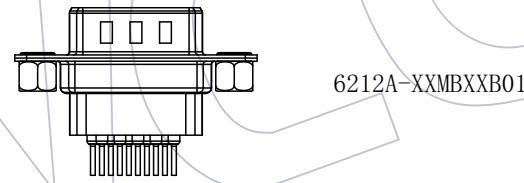
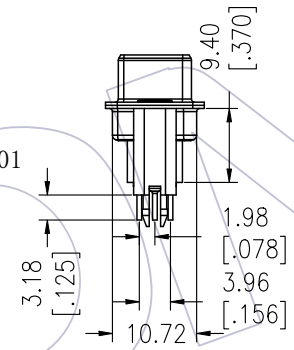
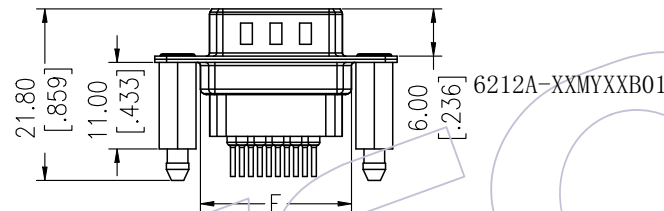
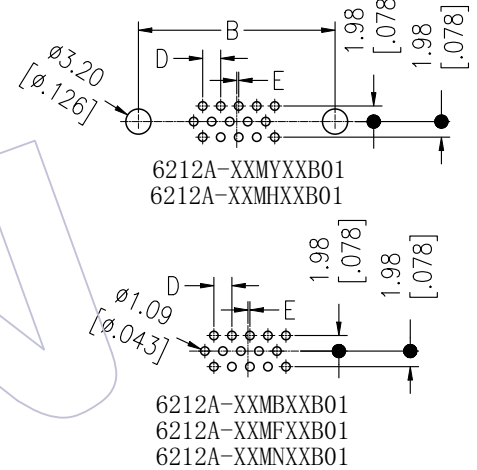
NOTES:

Current Rating: 3.0AMP
 Contact Resistance: 20mΩ Max
 Withstand Voltage: 500V AC/Minute
 Insulation Resistance: 1000MΩ Min
 Operation Temperature: -40°C to +105°C

Contact Material: Phosphor Bronze/Brass
 Contact plating: Au Or Sn over Ni
 Insulator Material: PBT+30%G.F UL94V-0
 Shell: Cold Roller Steel, Sn Or Ni Plated
 Nut: Brass, Sn Over Ni Plated



Recommended P.C.B Layout(Top Side)
 (PCB BOARD TOLERANCE±0.05)



Ordering Information

6212A-XX M X XX B 01

No. of Pins	Type	Contact Plating	Insulator Color
15,26,44,62P	Y=With Back Fork B=With Back Nut F=With Front Nut H=With Back Fork With Screw N=Without Fork Without Nut	S0=Gold Flash/Tin S3=10u"Gold/Tin S4=15u"Gold/Tin S5=30u"Gold/Tin SN=Tin	B:Black U:Blue

No. of Positions	DIM "A"	DIM "B"	DIM "C"	DIM "D"	DIM "E"	DIM "P"
15	16.92	24.99	30.81	19.28	7.04	2.29
26	25.25	33.32	39.14	27.65	6.88	2.29
44	38.96	47.04	53.04	41.30	6.88	2.29
62	55.42	63.50	69.32	57.44	6.99	2.41

OPERATION	DRAW	DATE	SCALE	FIT	PART NO.
X.X ±0.40	JYHuang	2012/12/04	UNIT	mm	6212A-XXMXXXB01
X.XX ±0.25	CHECK	DATE	SIZE	A4	TITLE:
X.XXX ±0.15	APPROVE	DATE	SHEET	1/1	HD-SUB MALE THREE ROW 180° DIP
Angle ± 3'			PROJ.		Customer NO.
DIM TOL					

WCON
 Http: www.wcon.com
 WCON-Dongguan Tel: +86 769 85358920
 WCON-Kunshan Tel: +86 512 57468408
 Fax: +86 769 85358915
 Fax: +86 512 57468468
 E-mail: sales@wcon.com
 E-mail: salesks@wcon.com